



Learning from Honeybees

“We have never known what we were doing because we have never known what we were *undoing*. We cannot know what we are doing until we know what nature would be doing if we were doing nothing”
(from *Preserving Wildness* Wendell Berry).





Primitive bee trapped in amber. It lived in a tropical jungle 100 million years ago, when flowering plants were just beginning to diversify. It's thought that bees and flowering plants co-evolved. This specimen has traits from modern bees and their evolutionary ancestors, the carnivorous [apoid wasps](#). Image via George Poinar Jr./ [OSU](#).
<https://earthsky.org/earth/fossil-bee-trapped-amber-parasites-pollen/>



9.4 metres up a poplar tree in the Arnot Forest around Cornell University USA: The Lives of Bees Thomas D Seeley



Mesolithic rock painting of a honey hunter harvesting honey and wax from a bee's nest in a tree dated 8000-6000 BC



Mesolithic house reconstruction at UCD, Dublin based on evidence of upright stakes in the ground

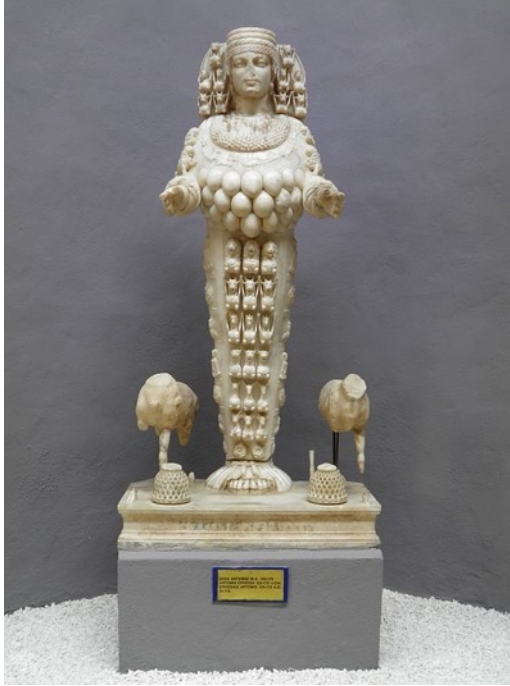


So 8000 years ago bees and humans were both living in round wooden structures. It had worked for the bees as they were already 99 million 2 thousand years old



The reconstructed hut at Swifterkamp, with elements of the plan of Pinneberg merged into the general Bergumermeer-type reconstruction. Photo by Yannick de Raaff. Content published under a Creative Commons 4.0 License.





Marble statue of the Ephesian Artemis, 125-175 CE. (Selcuk Museum, Selcuk, Turkey)



Wye Valley, Forestry Commission, Ancient Forest from Neolithic era until the beginnings of industrialisation, a variety of trees and scrub and meadows



Replica neolithic reed basket nativehands.co.uk



Viking longhouse reconstruction from Unst, Shetland



Bee skeps Kellie Castle Fife

Bees flying to Hive, man with sickle and woman. English c.1300. detail. bodl_Douce88



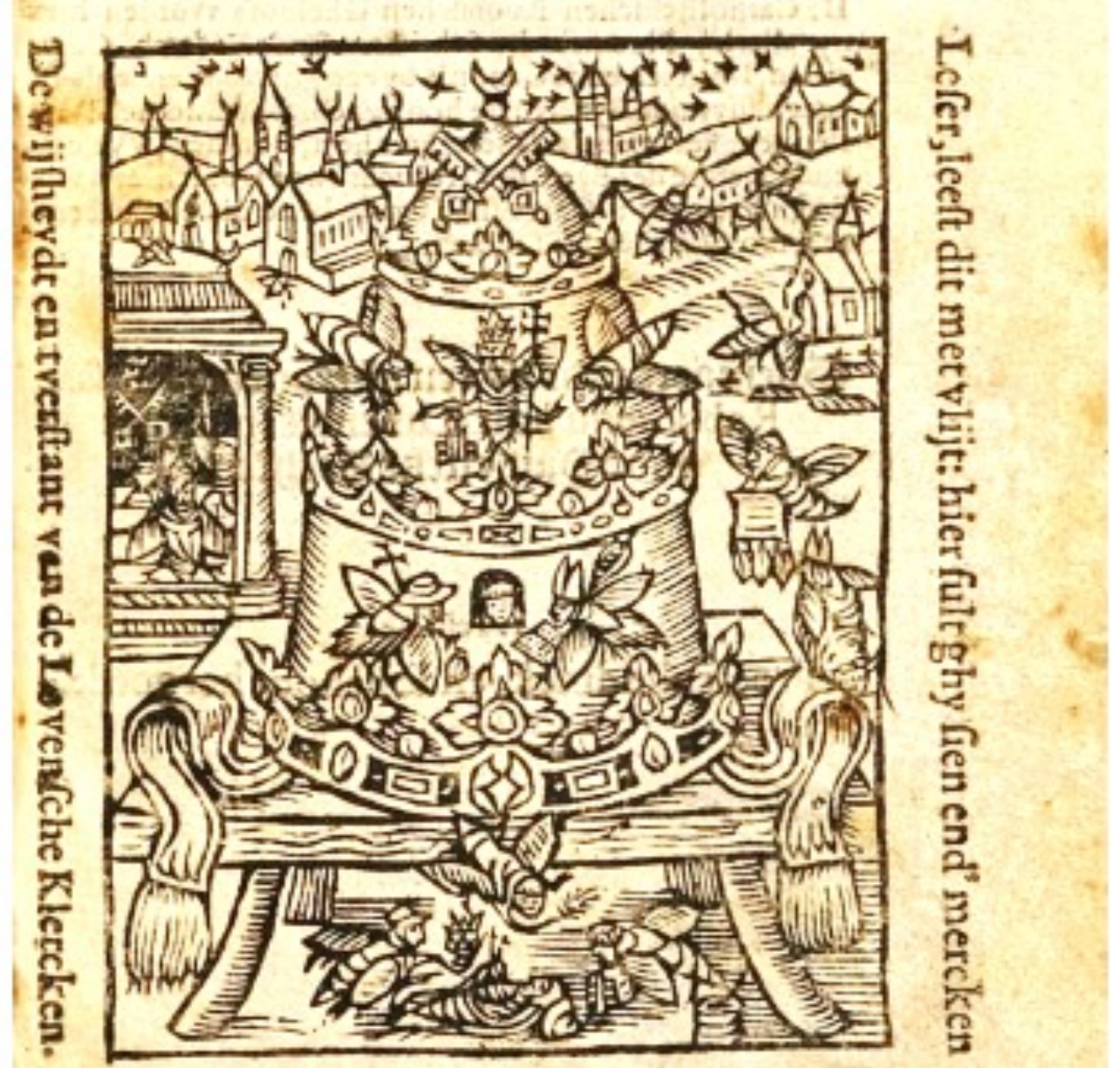
Honey is used as a wound dressing and preservative even as an embalming agent



Gold plaques embossed with winged bee goddesses, perhaps the Thriai, found at Kamiros Rhodes, dated to 7th century BCE (British Museum)

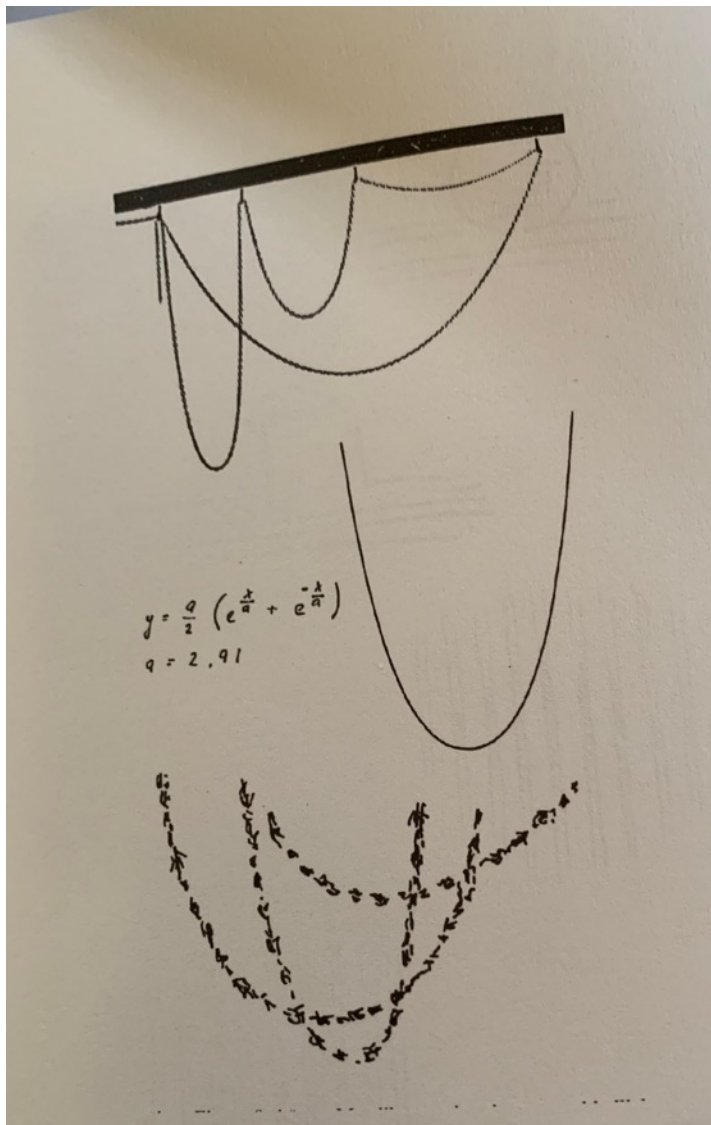


Durer, Albrecht (1471-1528)
1514 pen, ink and gouache on paper



Den byencorf der H. Roomsche Kercke By Filips van Marnix van Sint-Aldegond 1561







It required someone with Beuys's unique combination of interest and knowledge in nature, art, spirituality, and anthroposophy to see the potentialities in Steiner's surprising lectures on bees for a radically new approach to visual art.
David Adams, Ph.D.
Penn Valley, California, 1998

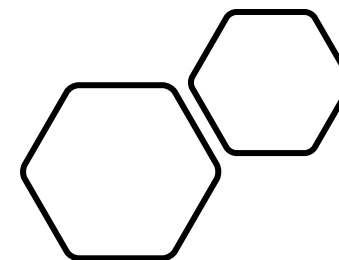


but a socialist organism in which all parts function as in a living body. In physiological terms this is not hierarchical: the queen bee's place lies between head and heart, and the drones become the cells which are constantly renewed. The whole builds a unity which has to function perfectly, but in a humane warm way through principles of cooperation and brotherhood.

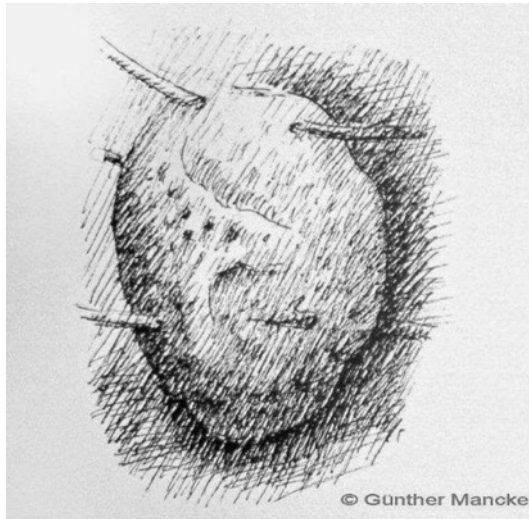
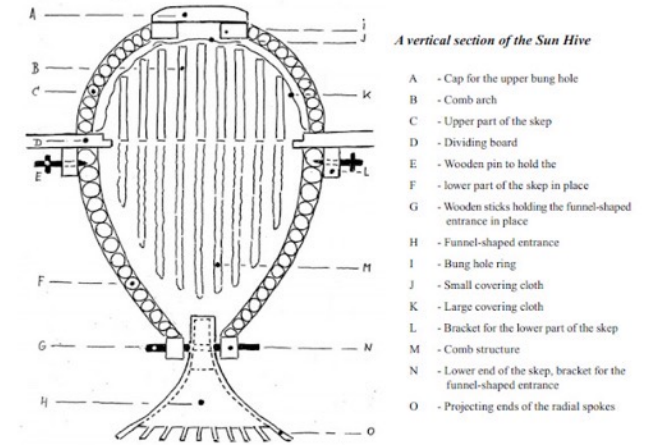
Tisdale, *Joseph Beuys*, p. 44.



Manchester adopted the symbol of a honey bee for the socialist model of human society 150 years ago



Sun hive and
swarm pics





The Tree Beekeeping Field Guide





